

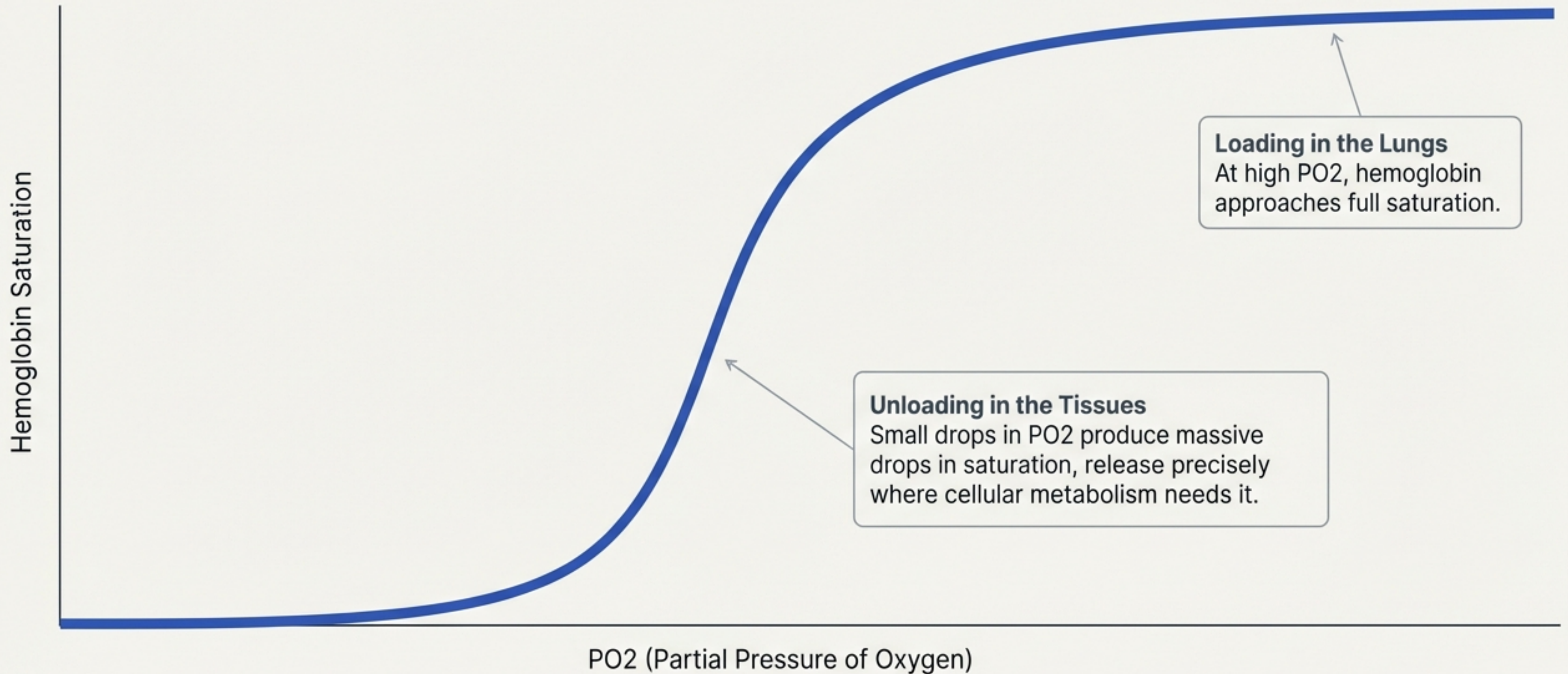



The Oxygen Dissociation Curve

Hemoglobin Affinity and Altitude Trade-offs

Based on the work of William Aird

The Core Mechanism: Cooperative Binding



The sigmoidal shape is driven by cooperative oxygen binding—a physical property that allows both efficient collection and precise delivery. 

Oxygen Transport: The System-Level Picture

Equation 1 (Delivery):

$$DO_2 = \text{Heart} \times \text{Red Blood Cells}$$

(Oxygen Delivery = Cardiac Output x Arterial Oxygen Content)

Equation 2 (Consumption / Fick Principle):

$$VO_2 = \text{Heart} \times (\text{Red Blood Cells} - \text{Blue Blood Cells})$$

(Oxygen Consumption = Cardiac Output x [Arterial Content - Venous Content])

Equation 3
(Arterial Content):

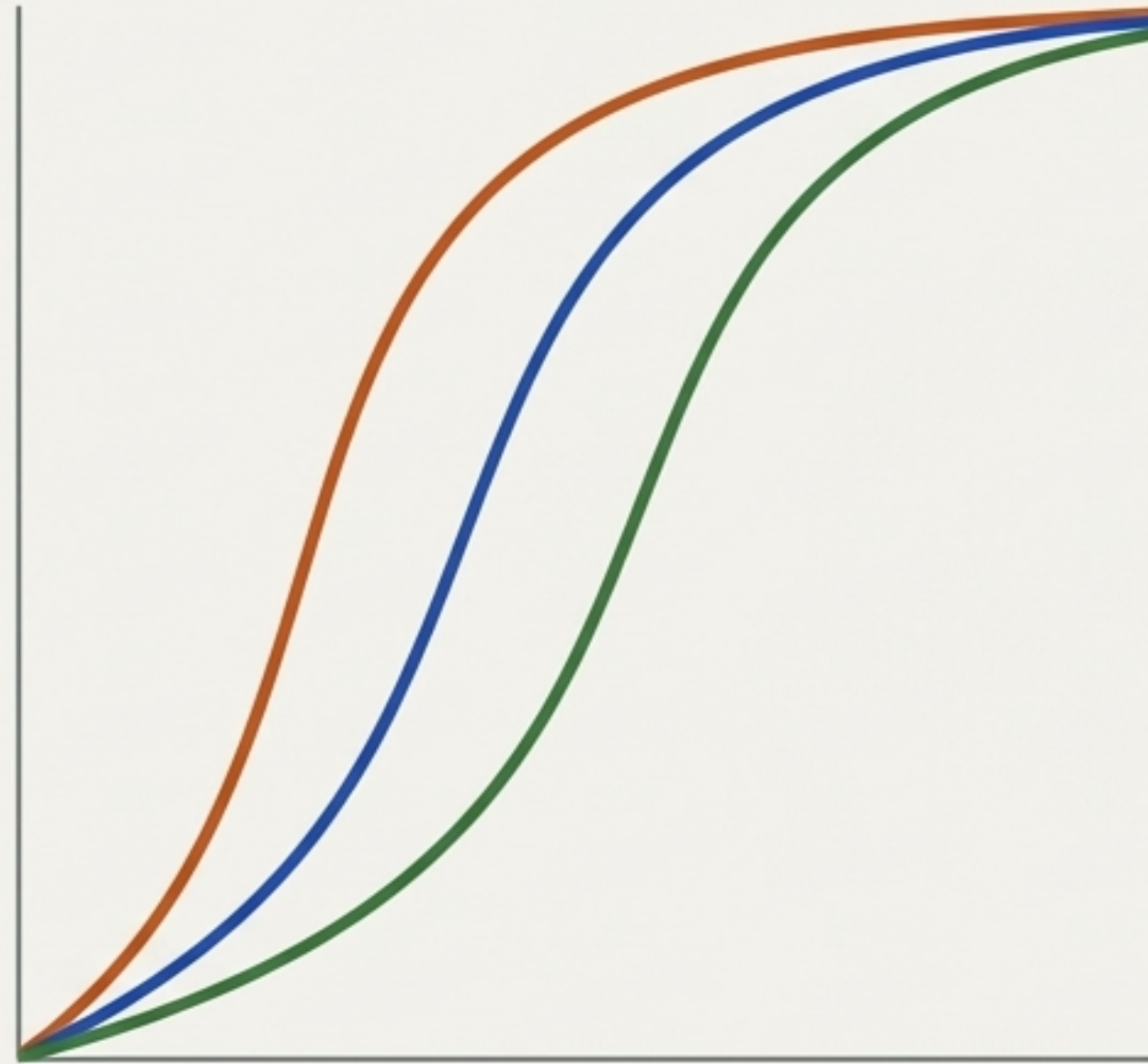
$$Ca \approx 1.34 \times Hb \times Sa$$

Key Implication: Hemoglobin affinity isn't isolated. It actively controls two distinct systemic levers: arterial oxygen loading (Ca) in the lung, and venous oxygen unloading (Cv) in the tissues.

Shifting the Curve: Defining Affinity

Left Shift = Higher Affinity

Hemoglobin binds oxygen more tightly.



Right Shift = Lower Affinity

Hemoglobin binds oxygen more loosely.

Affinity is not fixed. It dynamically changes in response to physiological conditions and structural modifications.

The Inherent Physiological Trade-off

Left Shift (Higher Affinity)

- + Advantage: Improved oxygen loading in the lung (low PO_2 conditions).
- Penalty: Impaired oxygen unloading in tissues.

Right Shift (Lower Affinity)

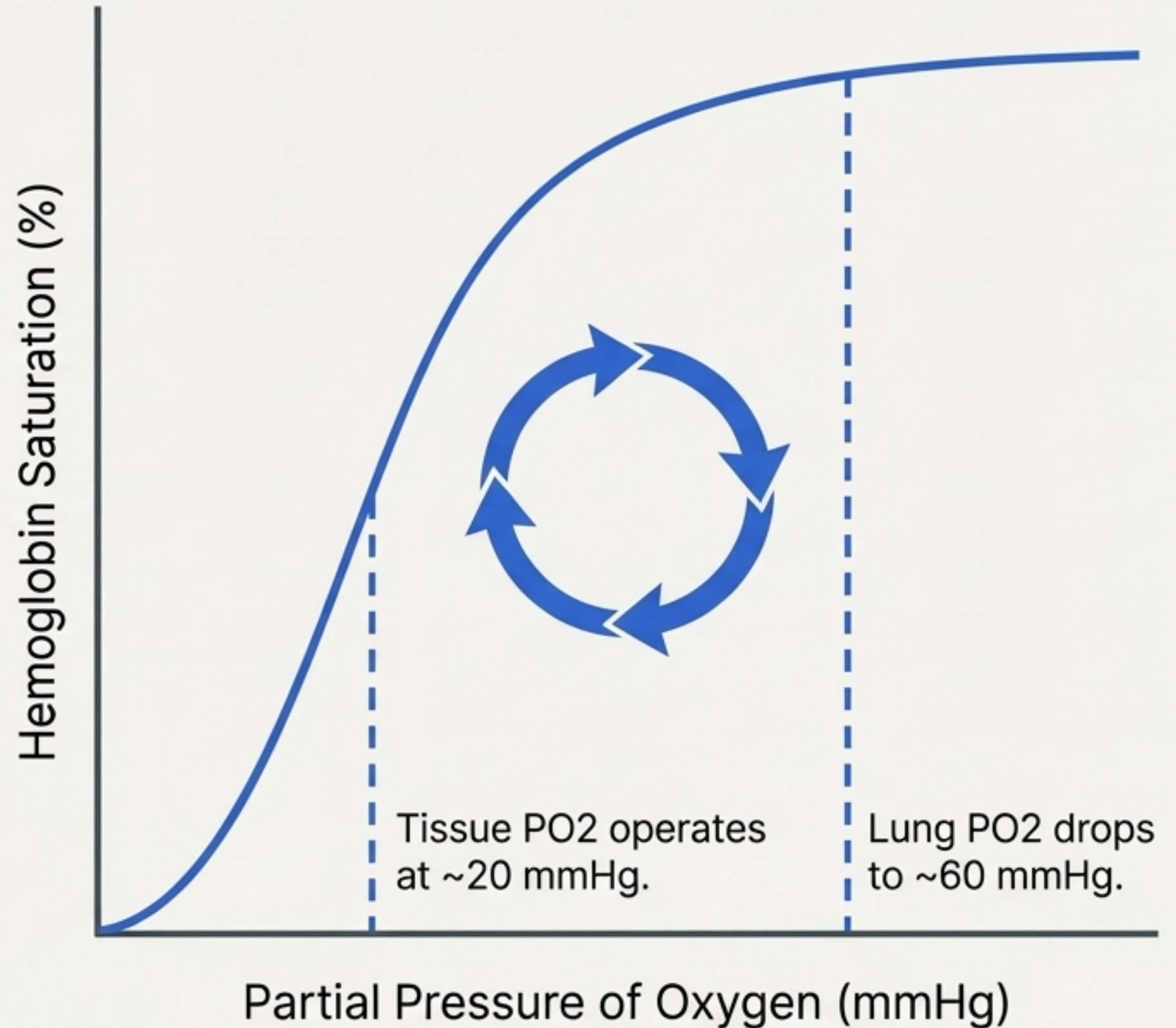
- Penalty: Impaired oxygen loading in the lung.
- + Advantage: Improved oxygen unloading in tissues.

You cannot improve both at once. A shift in either direction improves one side of the system while impairing the other.

The Stress Test: High Altitude

As atmospheric pressure falls, the partial pressure of oxygen in the lung declines. Hemoglobin molecules encounter oxygen less frequently.

The Problem: Arterial oxygen saturation plummets. Oxygen becomes scarce.



The Human Acclimatization Compromise

Mechanism: Over days, human red blood cells increase concentrations of 2,3-bisphosphoglycerate (2,3-BPG).


The Result: This induces a **Right Shift** in the curve, sacrificing loading efficiency to facilitate easier oxygen release in tissues.

System-Level View: Human acclimatization utilizes multiple levers (ventilation, cardiac output, red cell mass). The right shift optimizes for moderate hypoxia and normal tissue demand.



The Central Mystery

When oxygen becomes severely scarce, which biological strategy is superior?



Option A: Prioritize loading in the lungs (**Left Shift**)

Option B: Prioritize unloading in the tissues (**Right Shift**)

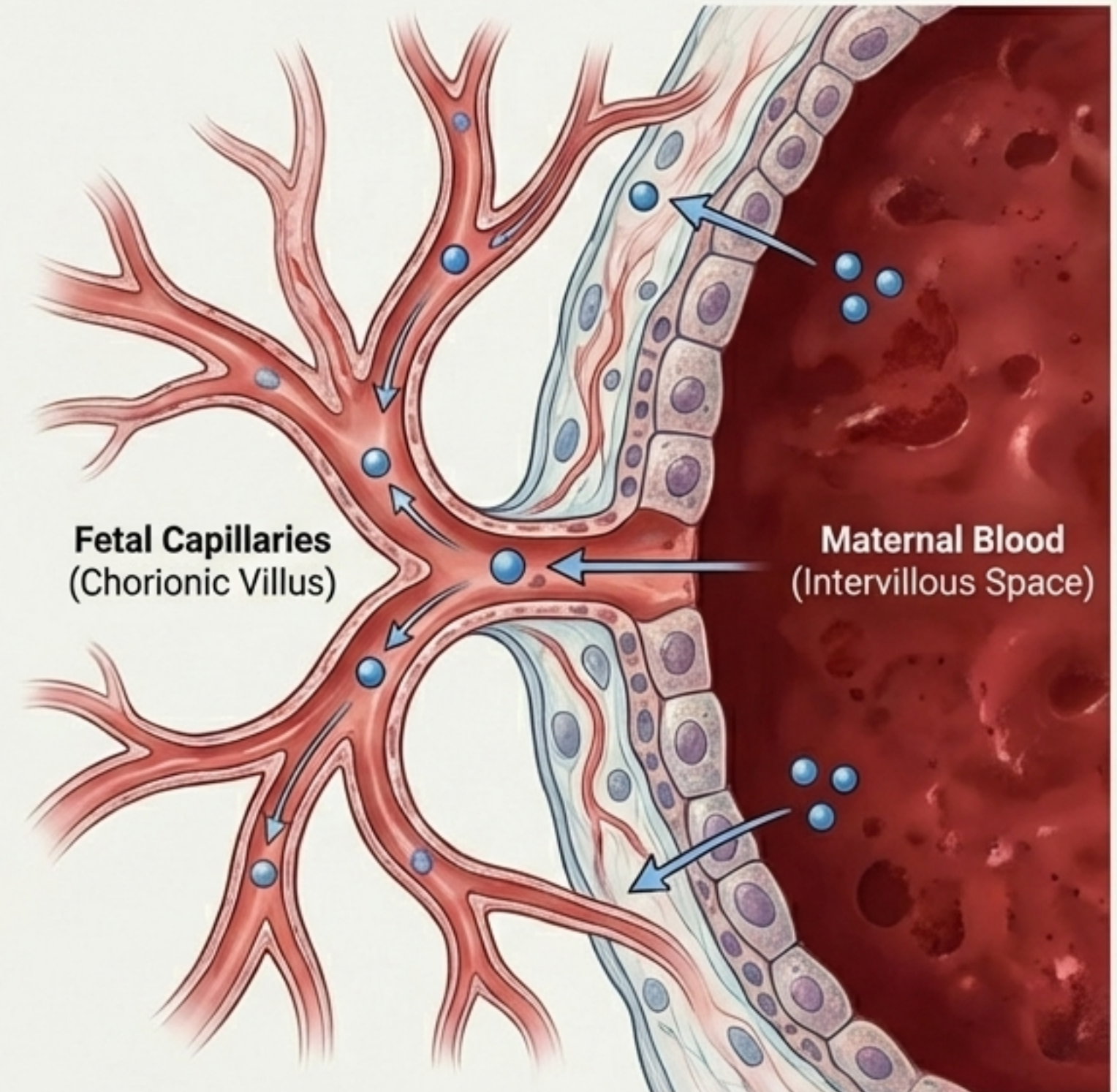
The standard human response is a right shift. But to find the optimal solution for extreme hypoxia, we must look beyond the curve to natural experiments.

Natural Experiment 1: The Fetus

The Environment: The fetus must extract oxygen from maternal venous blood across the placenta.

The Constraint: The partial pressure of oxygen (PO_2) in the intervillous space is incredibly low—typically just 25–35 mmHg. This is far lower than an adult lung.

The Question: How does the fetus survive when loading becomes the dominant constraint?

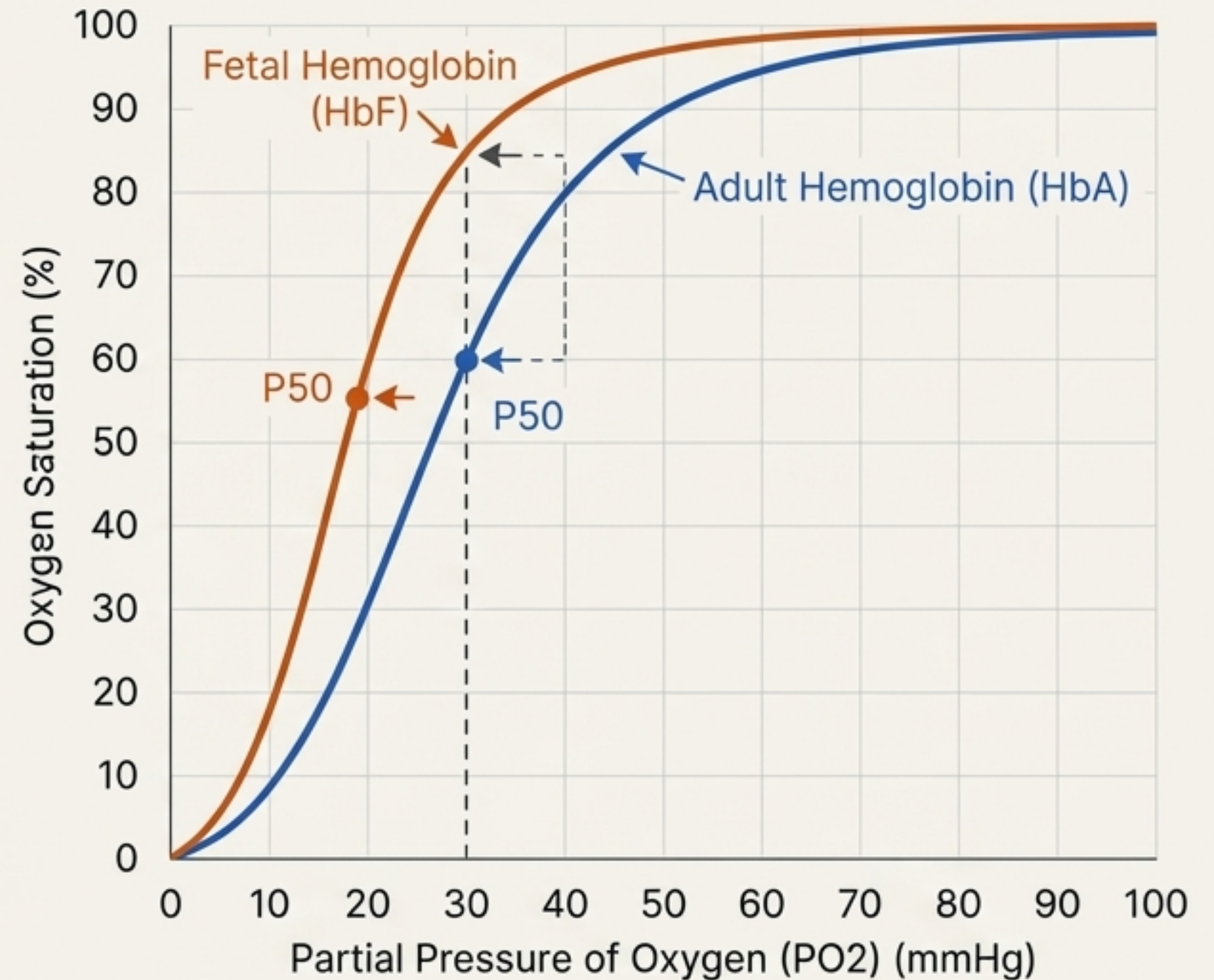


The Fetal Solution: A Massive Left Shift

The Mechanism: Fetal hemoglobin (HbF) interacts less strongly with 2,3-BPG than adult hemoglobin, significantly increasing its oxygen affinity.

The Data: HbF has a P50 of ~19 mmHg, compared to ~26–27 mmHg for adult hemoglobin.

The Result: At a placental P_{O2} of ~30 mmHg, the left-shifted HbF achieves substantially higher oxygen saturation. **Biology prioritizes loading.**



Natural Experiment 2: High-Altitude Animals



Subject 1: Bar-headed goose
(Migrates over Himalayas at
>7,000 m).



Subject 2: Andean camelids
(Llama, alpaca, vicuña at
~3,500–5,000 m).

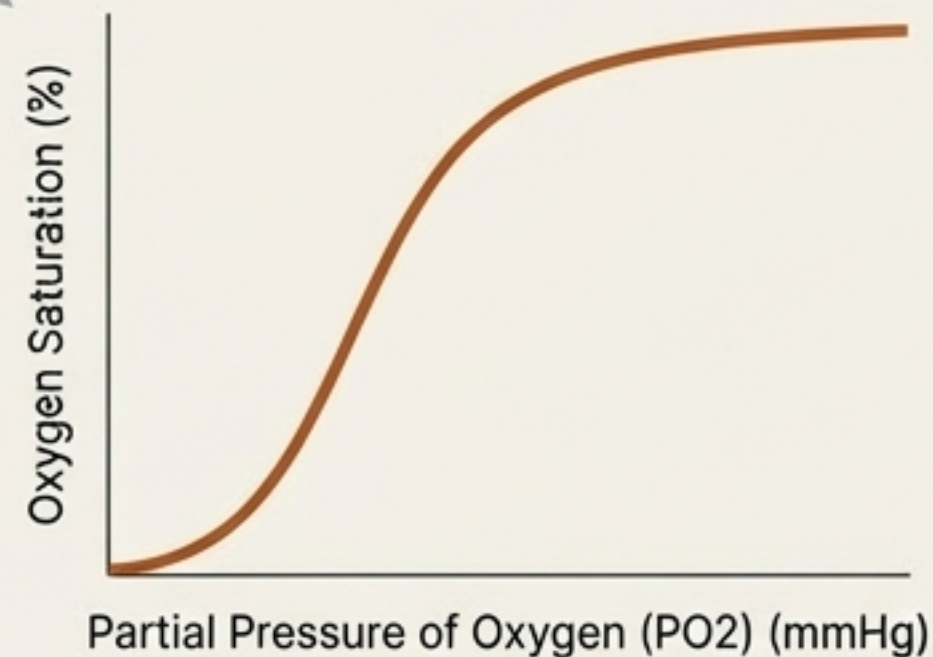


Subject 3: High-altitude deer
mouse (North American
mountain ranges).

The Context: Three entirely different species, vastly separated by evolutionary history, facing the same chronic environmental constraint: extreme oxygen scarcity.

The Evolutionary Solution: Convergent Left Shifts

Bar-headed goose:	Amino-acid substitutions in the α -chain reduce molecular constraints.
Andean camelids:	Intrinsically high oxygen affinity and reduced sensitivity to 2,3-BPG.
Deer mice:	Multiple mutations affecting both α and β chains.



The Verdict: Across diverse species, nature repeatedly solves the altitude problem through a **left shift**. Preserving **oxygen loading** in the lung is the dominant evolutionary constraint.

Natural Experiment 3: Human Genetics

The Setup: The **Hebbel Study** examined a rare family carrying a genetic mutation that produces **unusually high-affinity hemoglobin** (a permanent, built-in left shift).

The Test: Researchers observed this family alongside **unaffected relatives** as they ascended to high altitude.

The Context: Often, high-affinity variants cause **erythrocytosis** (increased RBCs) to compensate for poor tissue unloading. How would they fare when oxygen becomes scarce?



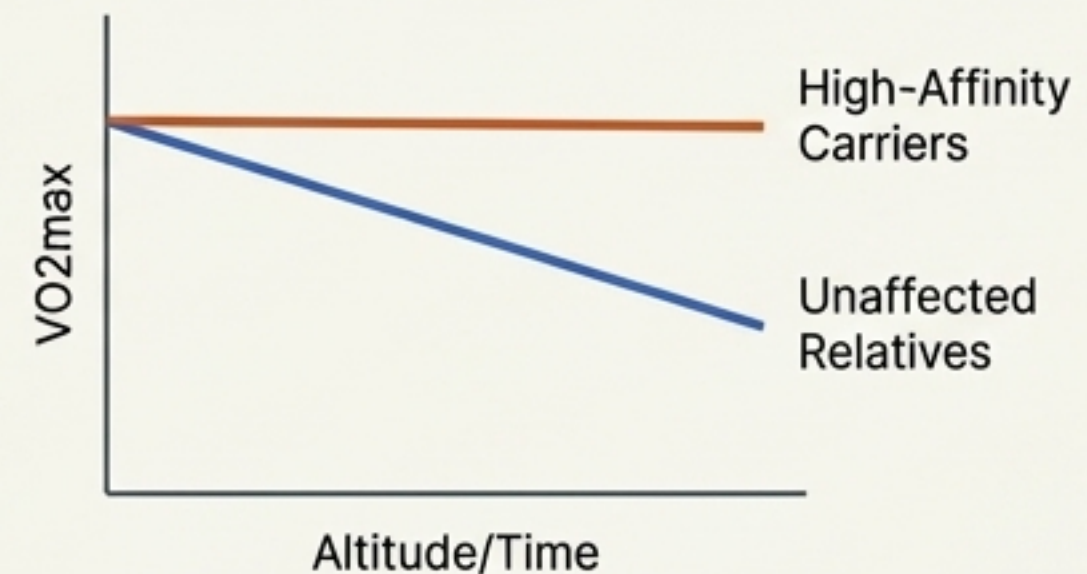
The Genetic Solution: Outperforming the Baseline

Arterial Saturation



Arterial Saturation: High-affinity carriers experienced minimal arterial desaturation compared to normal relatives at the same ambient PO_2 .

Exercise Capacity (VO_{2max})



Exercise Capacity (VO_{2max}): Normal subjects showed expected declines in VO_{2max} . High-affinity carriers maintained their VO_{2max} .

Crucial Detail: The improved tolerance could not be attributed solely to erythrocytosis.

The Conclusion: The normal human acclimatization response (a right shift) may not be optimally adaptive for severe altitude.

The Lesson of the Curve

An anatomical illustration of the human heart and lungs. The heart is centrally located, showing its four chambers and major blood vessels. The lungs are on either side, with a dense network of branching bronchi and capillaries. A thick blue curve is drawn across the image, starting from the bottom left, curving upwards and to the right, and then slightly downwards towards the right edge. The curve passes over the heart and the upper part of the lungs.

The Verdict: When oxygen is extremely scarce, loading becomes the dominant constraint. Biology prioritizes capturing oxygen over releasing it easily.

Final Takeaway: Physiological curves define problems. They display physical constraints, reveal inherent tensions, and map out possible operating paths. But they do not dictate the answer. The optimal solution emerges only when the curve is placed back into the living, evolving system.