

# The Clinical Metaphor of Cold

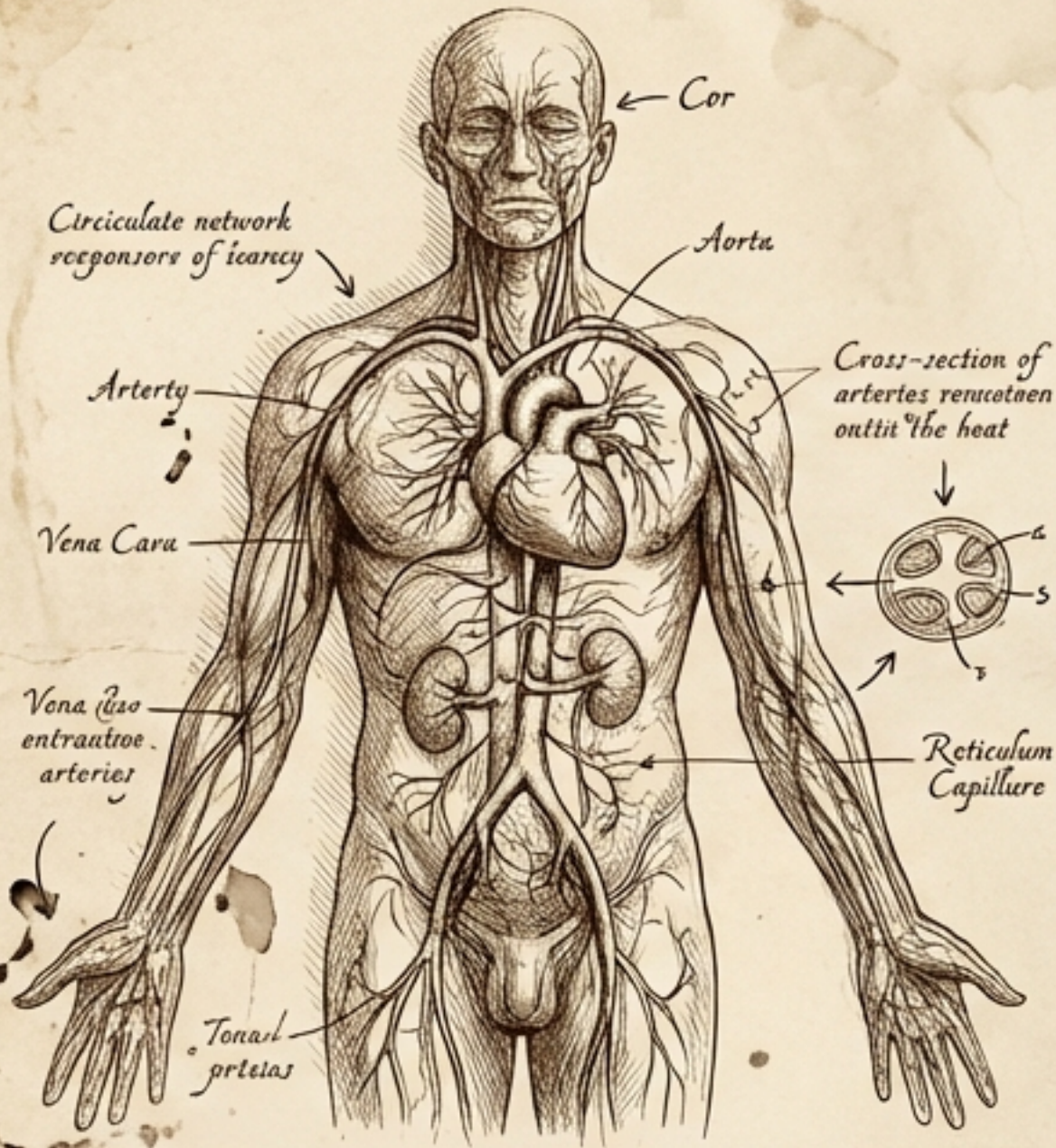
*How Temperature Became a Language of Harm, Distance, and Lost Vitality.*



FROSTBITE

Medical language about cold is not decorative. It is preserved physiology.  
— William Aird

# A Language of Diminished Flow



Long before thermometers, cold described the feeling of life withdrawing.

## WARMTH

- Animated, responsive, alive

## COLD

- Slowed, stiffened, lost coherence

# The Metaphor of Stasis

Blood  
Runs  
Cold

In everyday language:  
Fear, dread, loss of  
courage.

In medical intuition:  
Impaired circulation.  
Slowed flow.  
Withdrawal from the  
periphery.

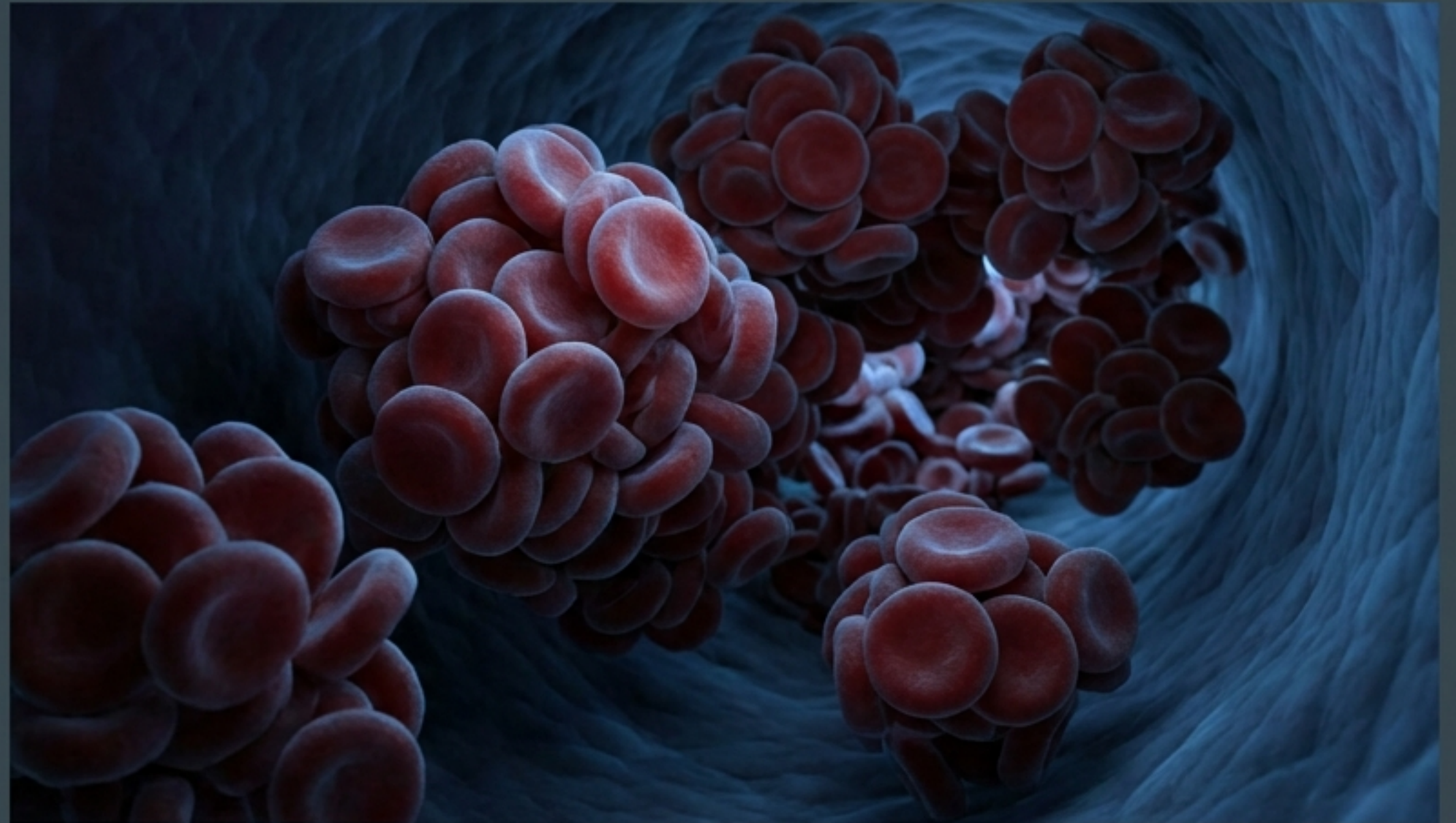
The metaphor is grounded in bodily experience. When blood "runs cold," sensation fades and the body feels less inhabited.

# The Physiology of Stasis: Agglutination

Cold Agglutinin Disease (CAD) gives the metaphor literal form.

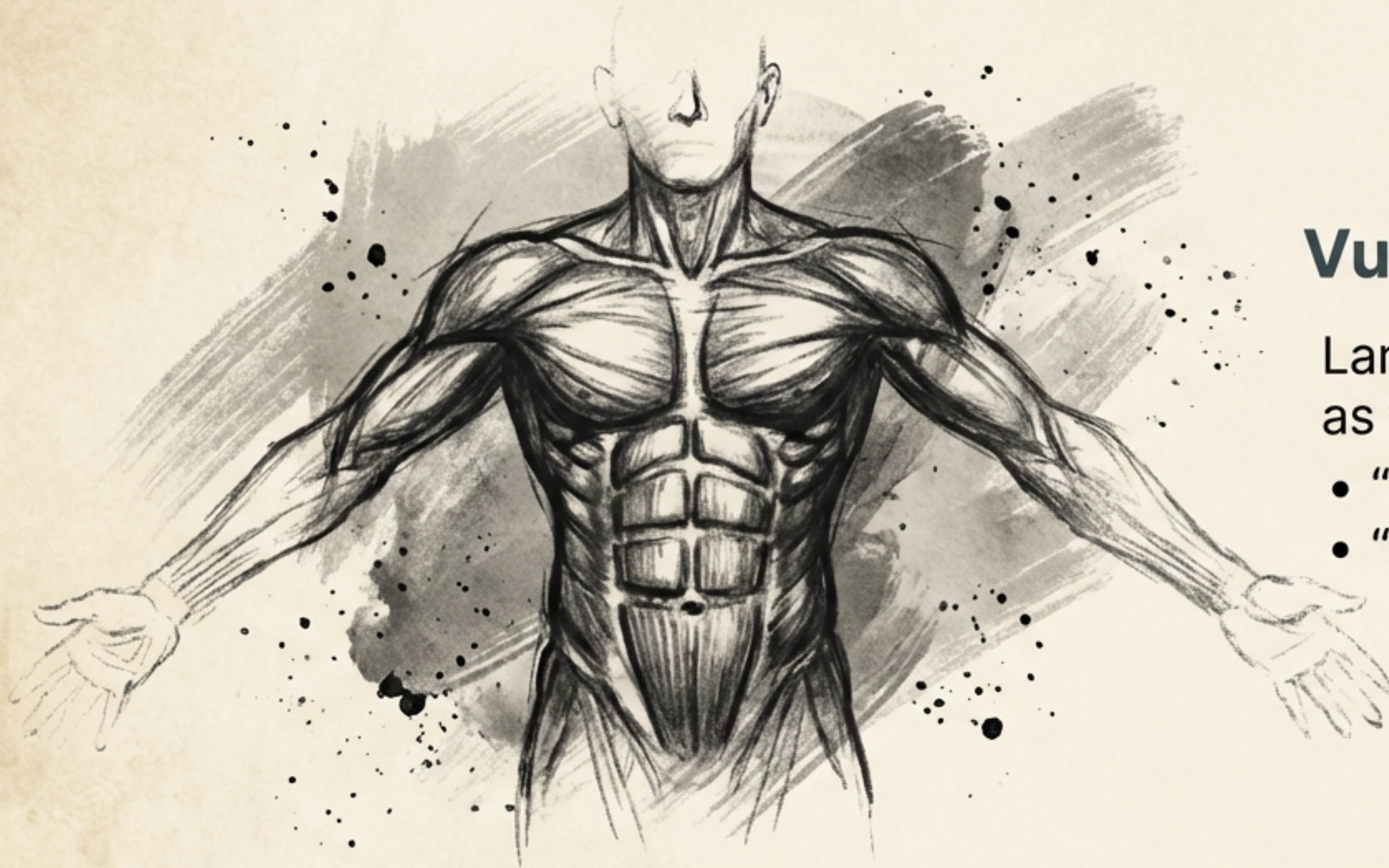
Blood does not merely feel cold; it behaves differently.

- It aggregates.
- It slows.
- It obstructs flow.



*“What language has long suggested, CAD demonstrates.”*

# The Metaphor of The Edge



## Vulnerable Borders

Language marks the body's edges as the first line of failure.

- "Hands grow cold first."
- "Noses numb."

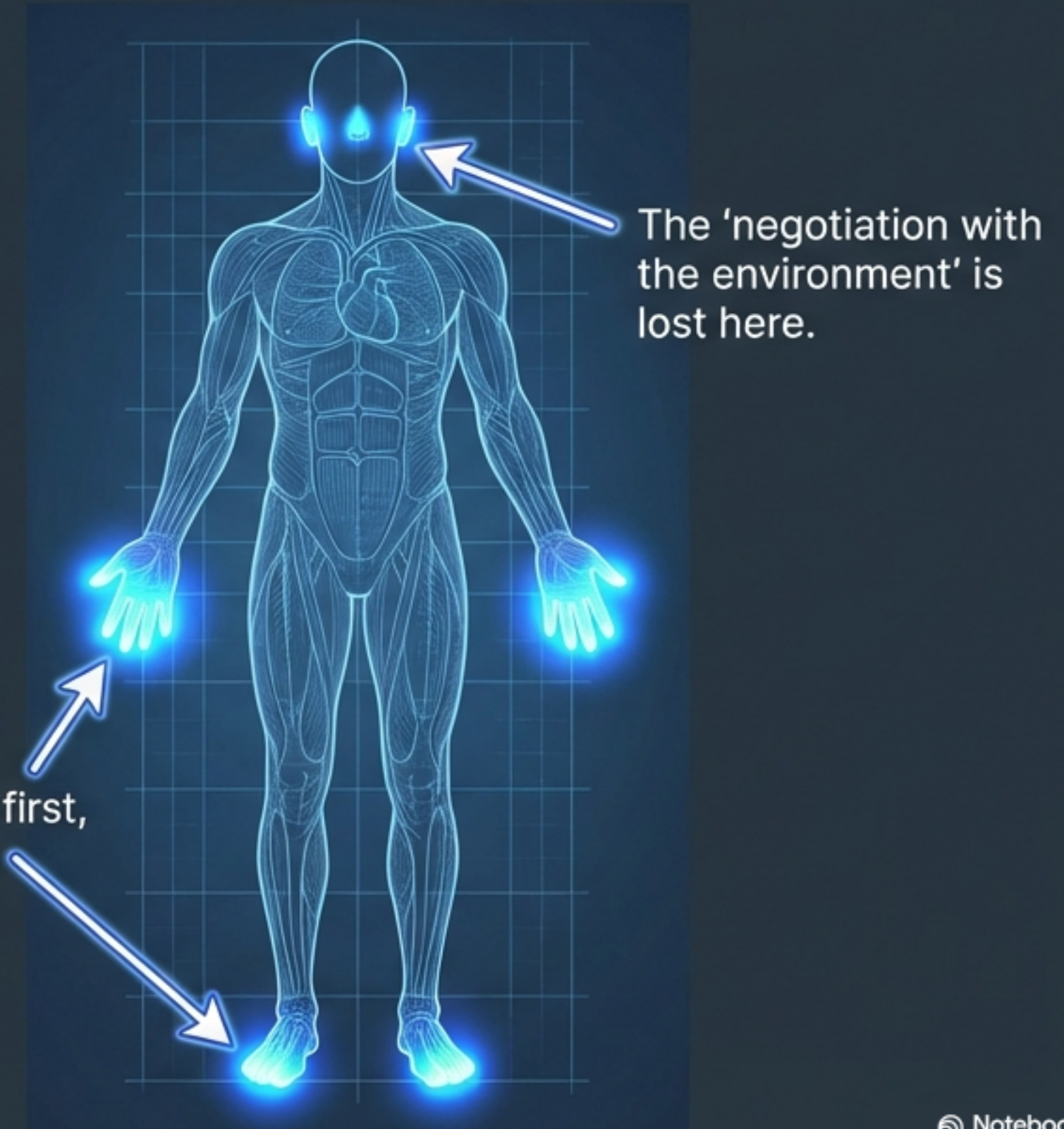
Insight: The periphery is where the body negotiates with the environment.  
It is where circulation thins and protection fails.

# The Physiology of The Edge: Acral Cyanosis

In CAD, pathology declares itself precisely at the linguistic edge.

Acral cyanosis is not just a clinical finding; it is a confirmation of the metaphor.

Where temperature drops first,  
the disease manifests.



# The Metaphor of Revelation



## The Unmasking

Historically, cold was understood not as the creator of illness, but as the revealer of weakness.

Cold exposes what warmth conceals.

It makes visible the hidden limits of circulation, resilience, and balance.

# The Physiology of Revelation: The Trigger



Cold does not create the disease. It reveals it.

The antibodies are already present. Temperature simply unmask their consequences.

Reframing: Changing 'Cold triggers symptoms' to '**Cold reveals vulnerability**' alters how patients understand their bodies.

# The Metaphor of Distance



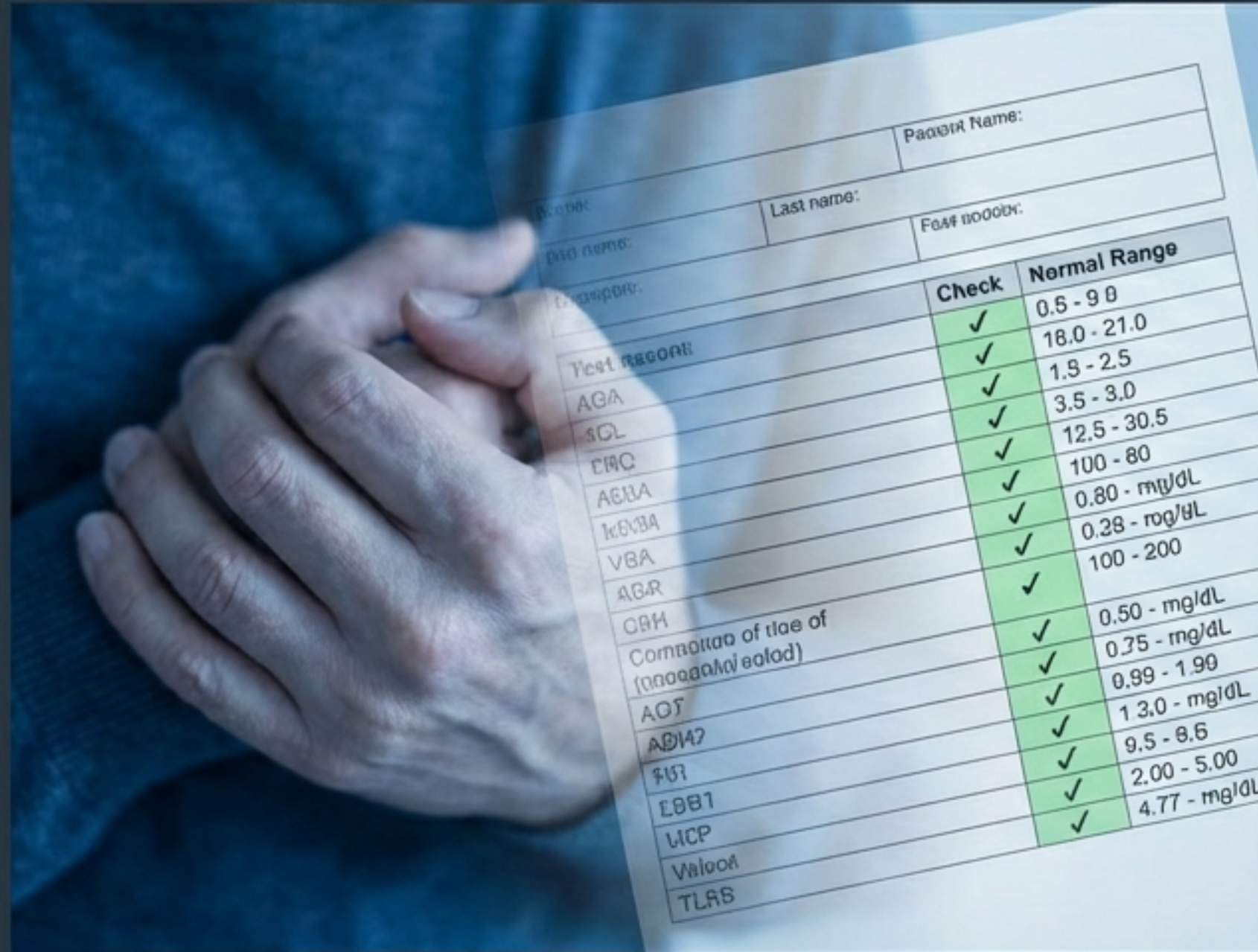
## Moral Weight

To be 'cold' as a clinician is to be distant, unfeeling, and detached.

Cold Comfort: Offering reassurance without warmth.  
A failure to restore proximity.

Care is expected to be warming—restoring the connection that the disease has severed.

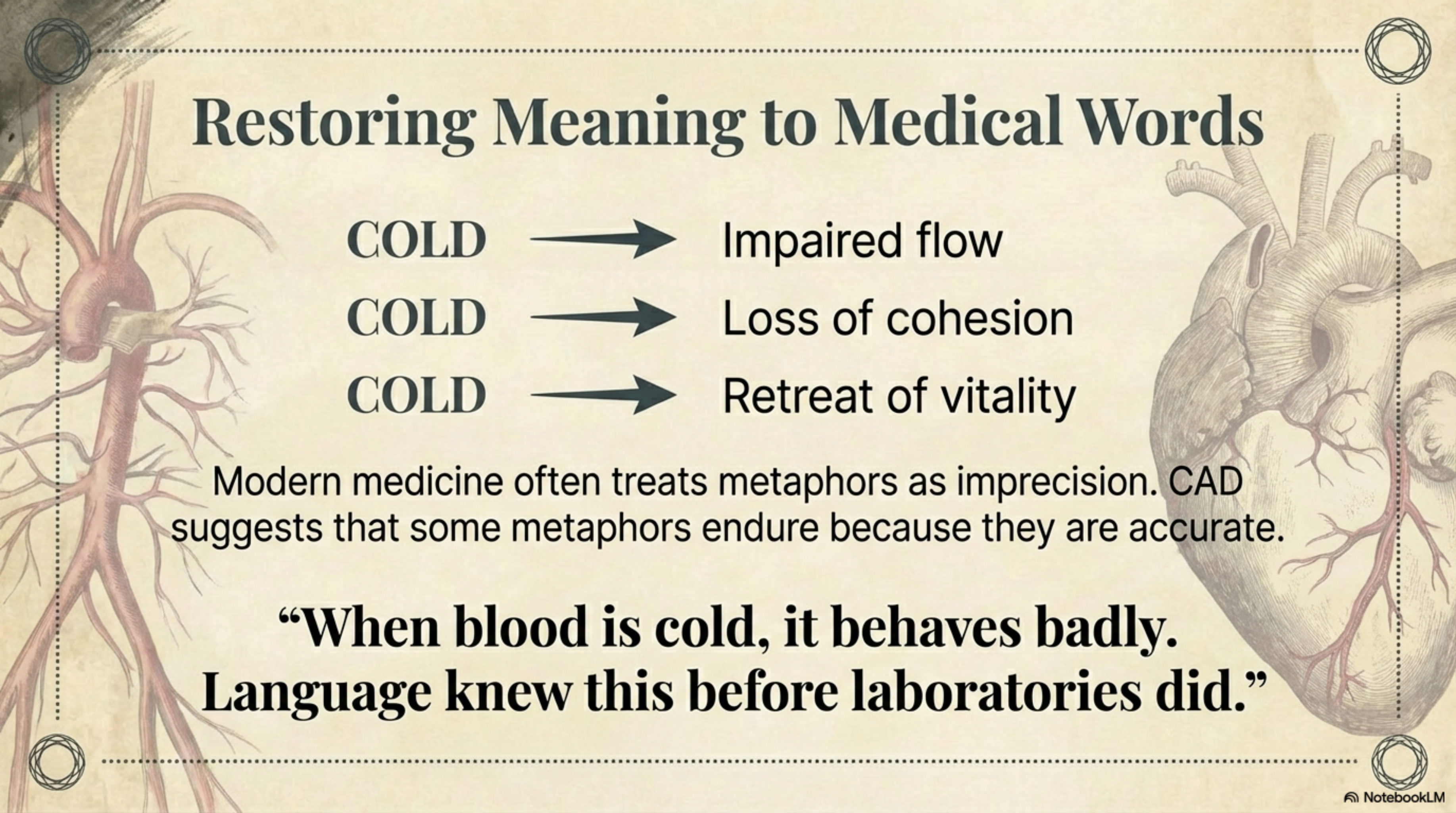
# The Experience of Distance



## Compounded Harm

- In CAD, the metaphors converge.
- THE SYMPTOM: Physical cold and circulatory obstruction.
- THE RESPONSE: Emotional coldness when symptoms are minimized because lab numbers look reassuring.

The result is a **compounded harm**—felt, even if never named.



# Restoring Meaning to Medical Words

<b>COLD</b>	→	Impaired flow
<b>COLD</b>	→	Loss of cohesion
<b>COLD</b>	→	Retreat of vitality

Modern medicine often treats metaphors as imprecision. CAD suggests that some metaphors endure because they are accurate.

**“When blood is cold, it behaves badly.  
Language knew this before laboratories did.”**

# Metaphor is Memory

Cold Agglutinin Disease does not just challenge physiology. It challenges us to listen more carefully to the language medicine has been using all along.

- Metaphors are not the enemy of science; they are its precursors.
- Language preserves insight long before explanation arrives.

**Listen to the cold. It is speaking a language of physiology.**

