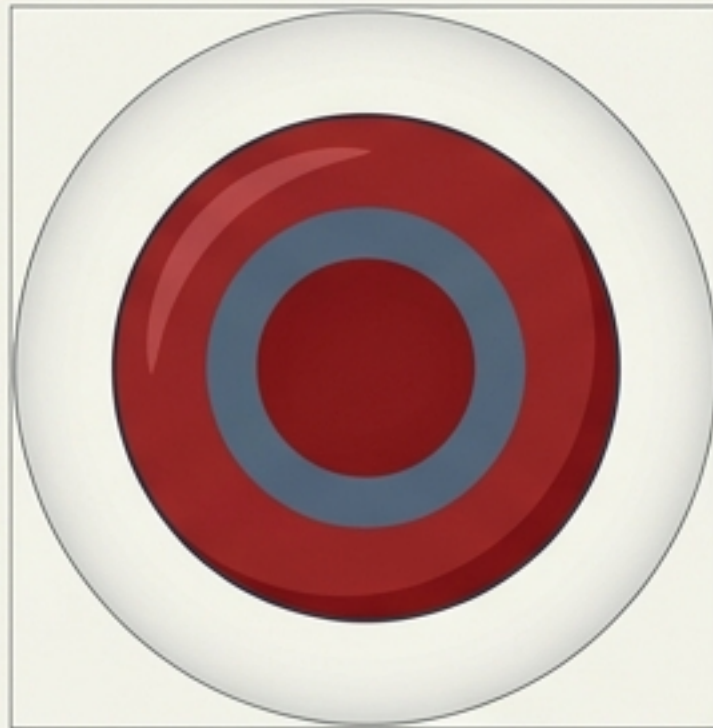


The Language of Shape

*Metaphor, Meaning, and the Limits
of Naming in Hematology.*

Based on the essay by William Aird.

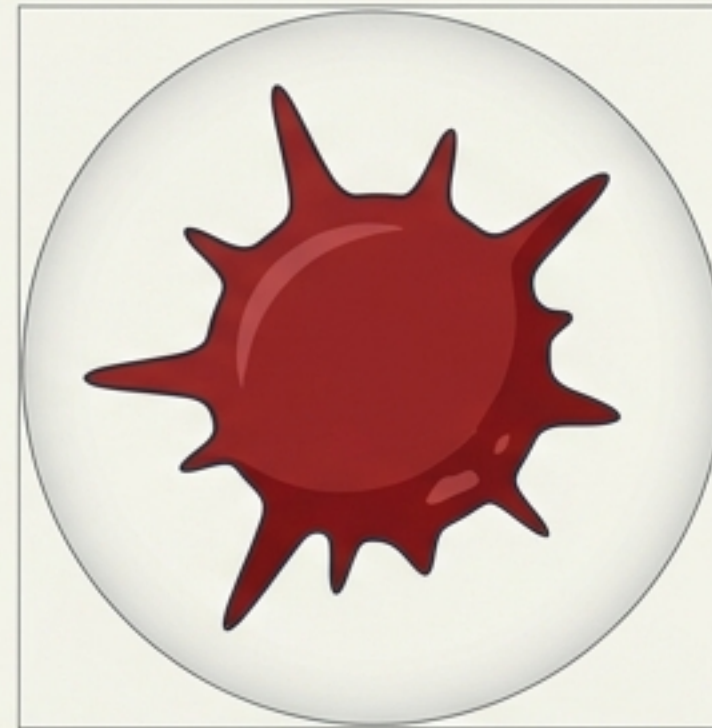
We encounter language before biology.



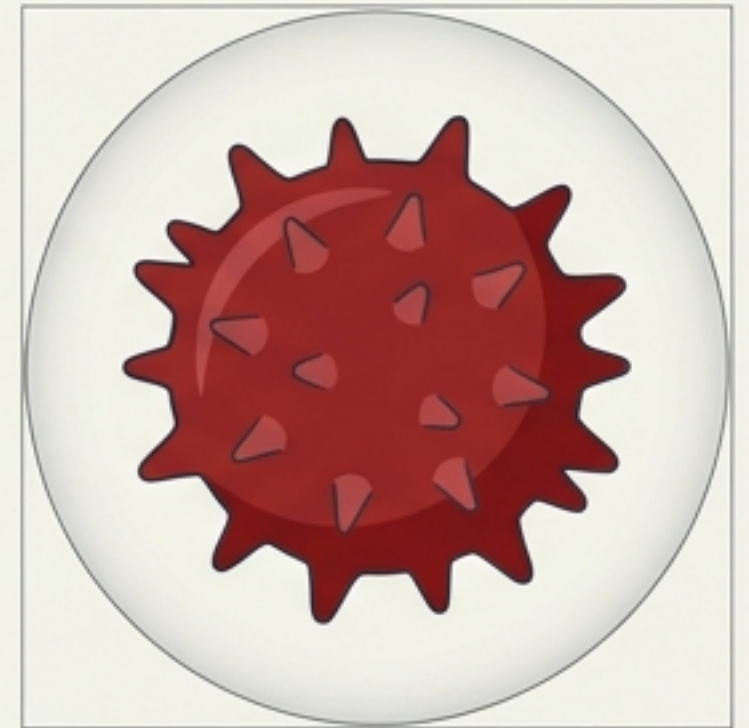
TARGET



TEARDROP



SPUR



BURR

When we look through a microscope, we decide what counts as a feature by naming it. These names feel natural and inevitable, but they are choices. They are metaphors that shape how we perceive, reason, and sometimes misunderstand the microscopic world. Naming is the first act of diagnosis.

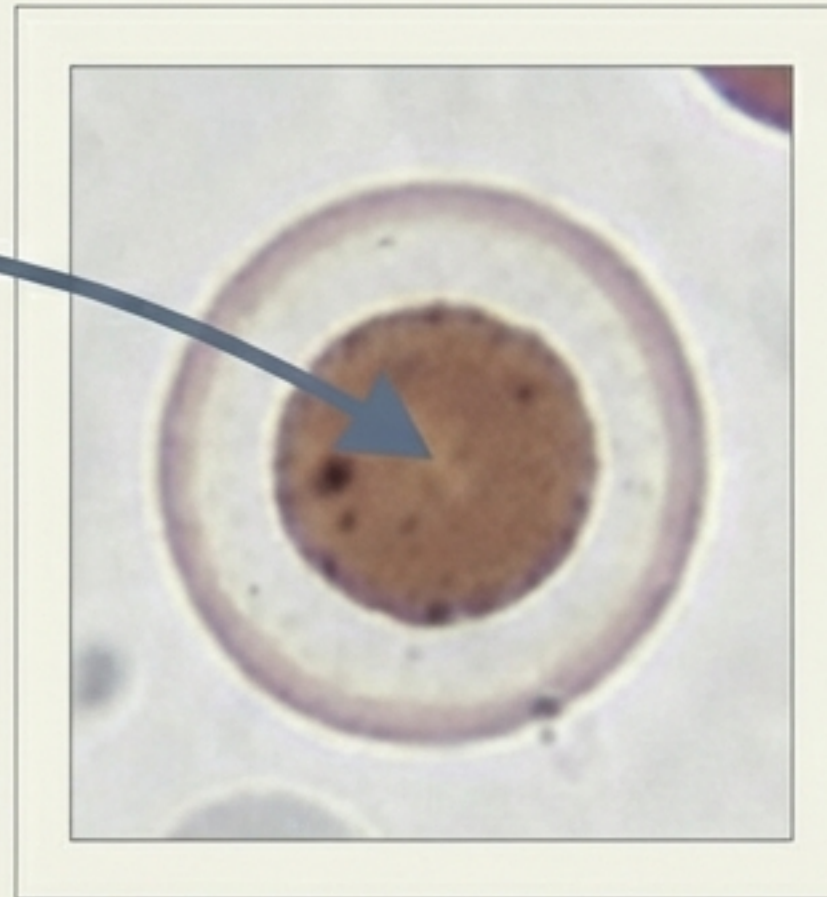
**We do not simply see cells;
we see them through borrowed worlds.**

The Mechanism of Mapping



Source Domain
(The Known)

Imported
Meaning

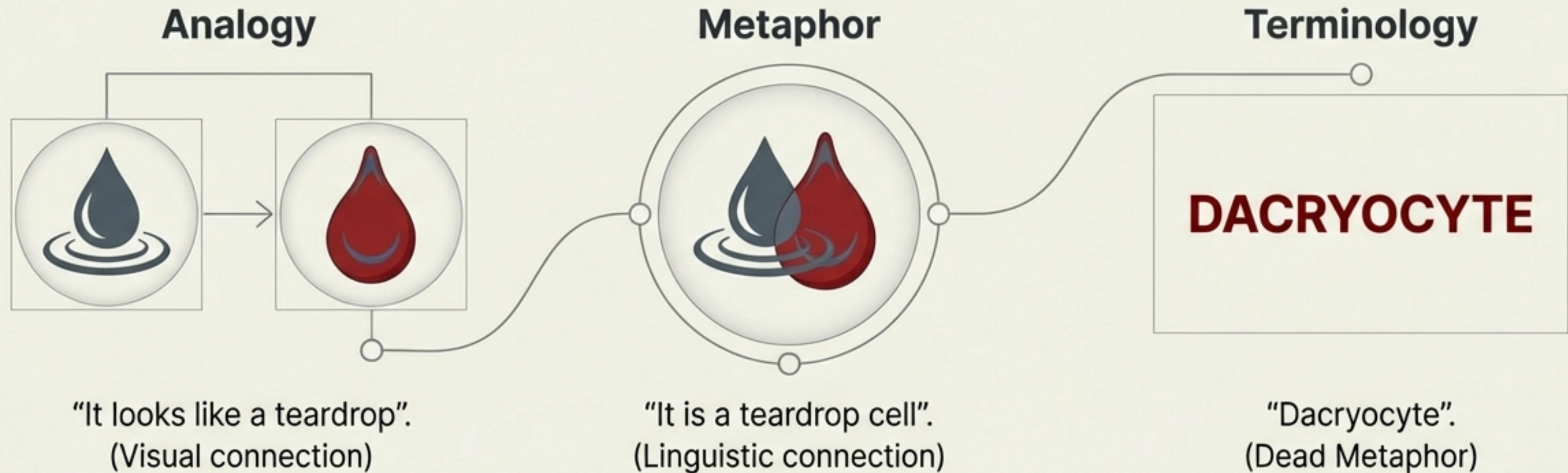


Target Domain
(The Unknown)

Morphology is interpretive. It moves from the familiar to the unfamiliar.

The metaphor directs our attention, telling us to look for the relationship between the center and the edge.

Live metaphors create insight; dead metaphors create expertise.



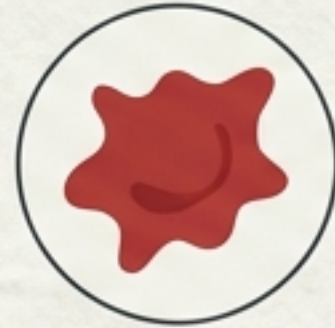
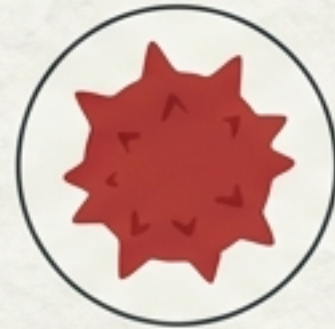
In poetry, a metaphor lives by sustaining tension between the object and the image. In medicine, that tension must collapse so recognition becomes automatic. 'Target cell' ceases to be a comparison and becomes the name of a category.

Hematology speaks two languages.

THE VERNACULAR

- Burr
- Spur
- Teardrop

Vivid. Culturally grounded.
Immediate. Used for
bedside teaching.



THE CLASSICAL

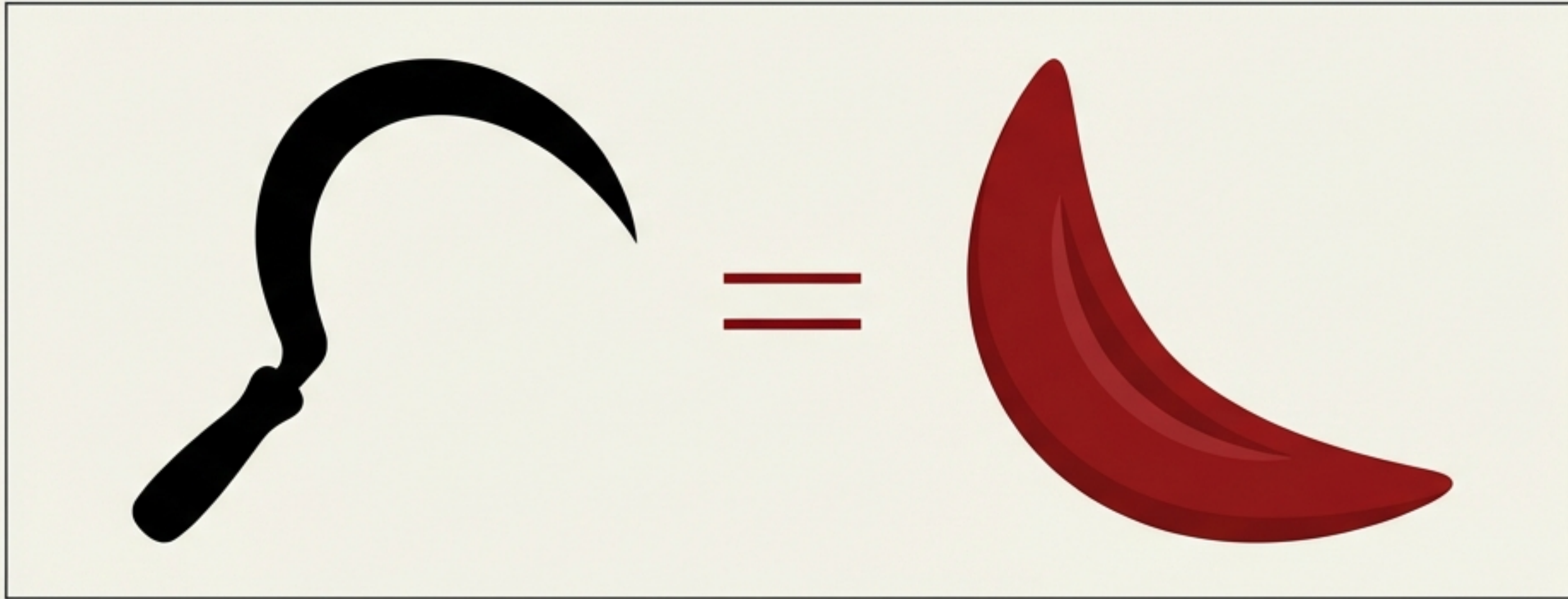
- Echinocyte
- Acanthocyte
- Dacryocyte

Greek-derived.
Standardized. Technical.
Used for classification.



The morphology does not change, but the context does. In liver disease, we see "Spur cells." In abetalipoproteinemia, we identify "Acanthocytes."

The name encodes the pathology.



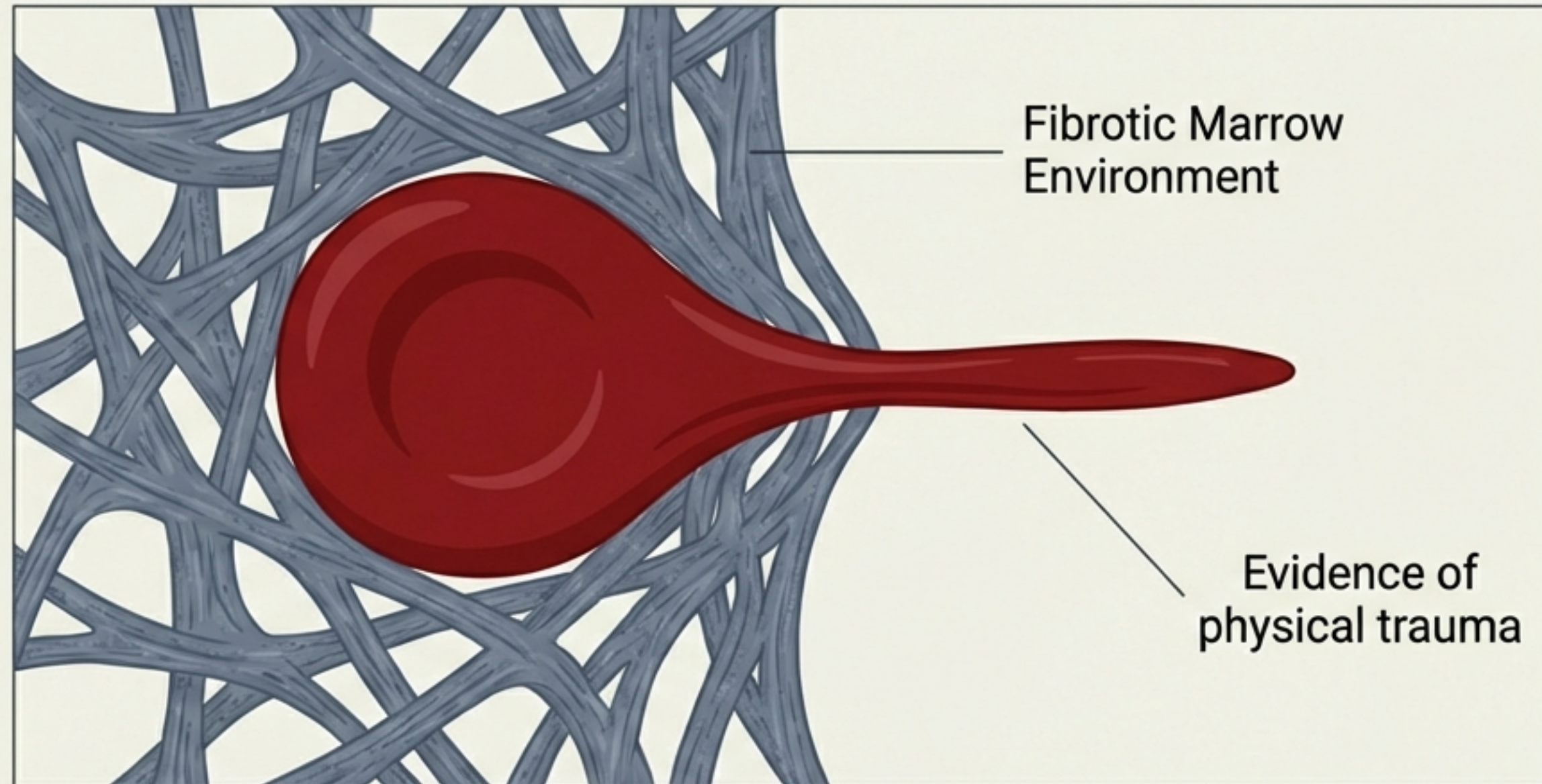
A sickle is not merely curved. It is rigid, sharp, and capable of cutting.

- **The Metaphor:** Sharpness and rigidity.
- **The Biology:** Stiff, injurious, and obstructive.

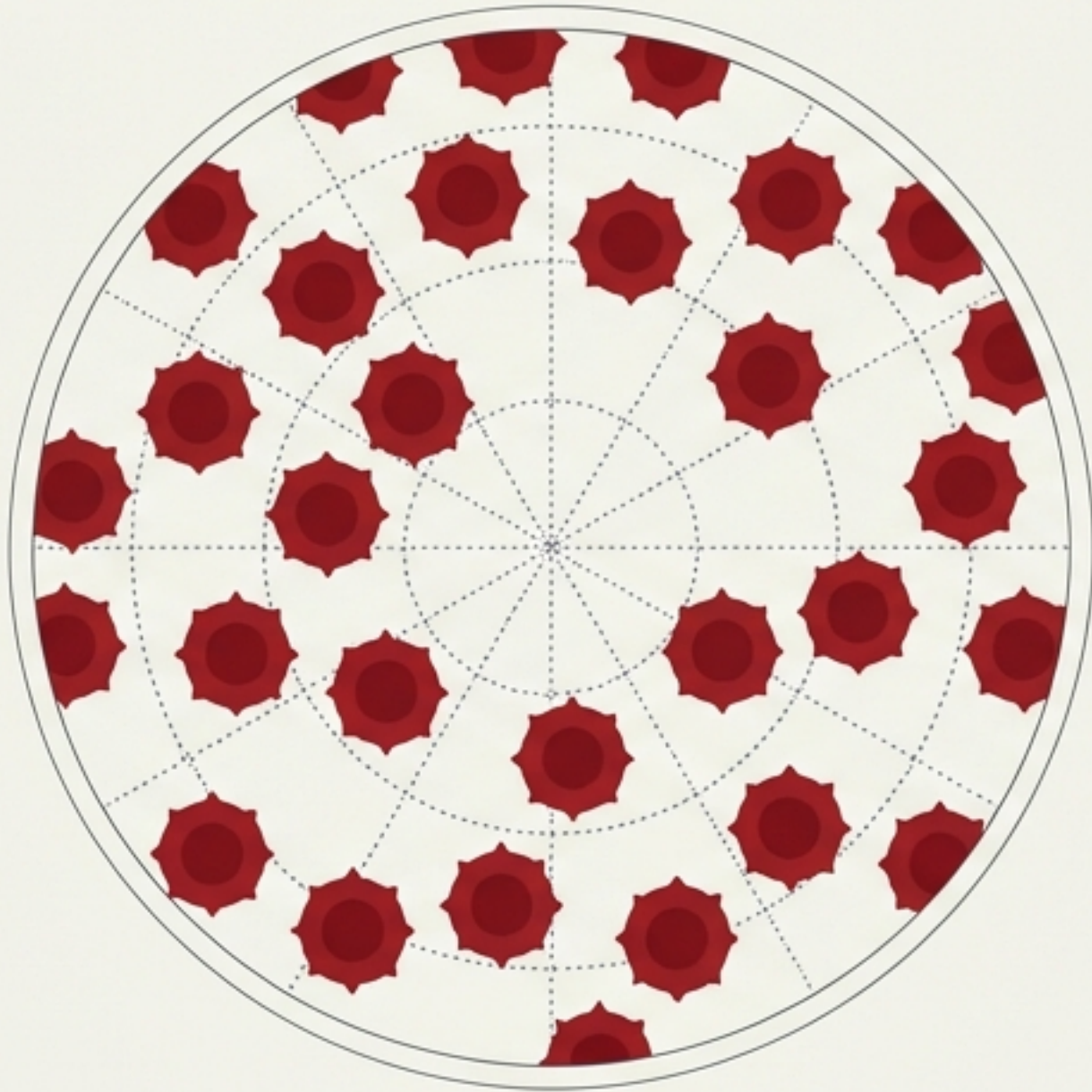
The word captures the cell's physical capacity to cause pain.

Shape is the memory of deformation.

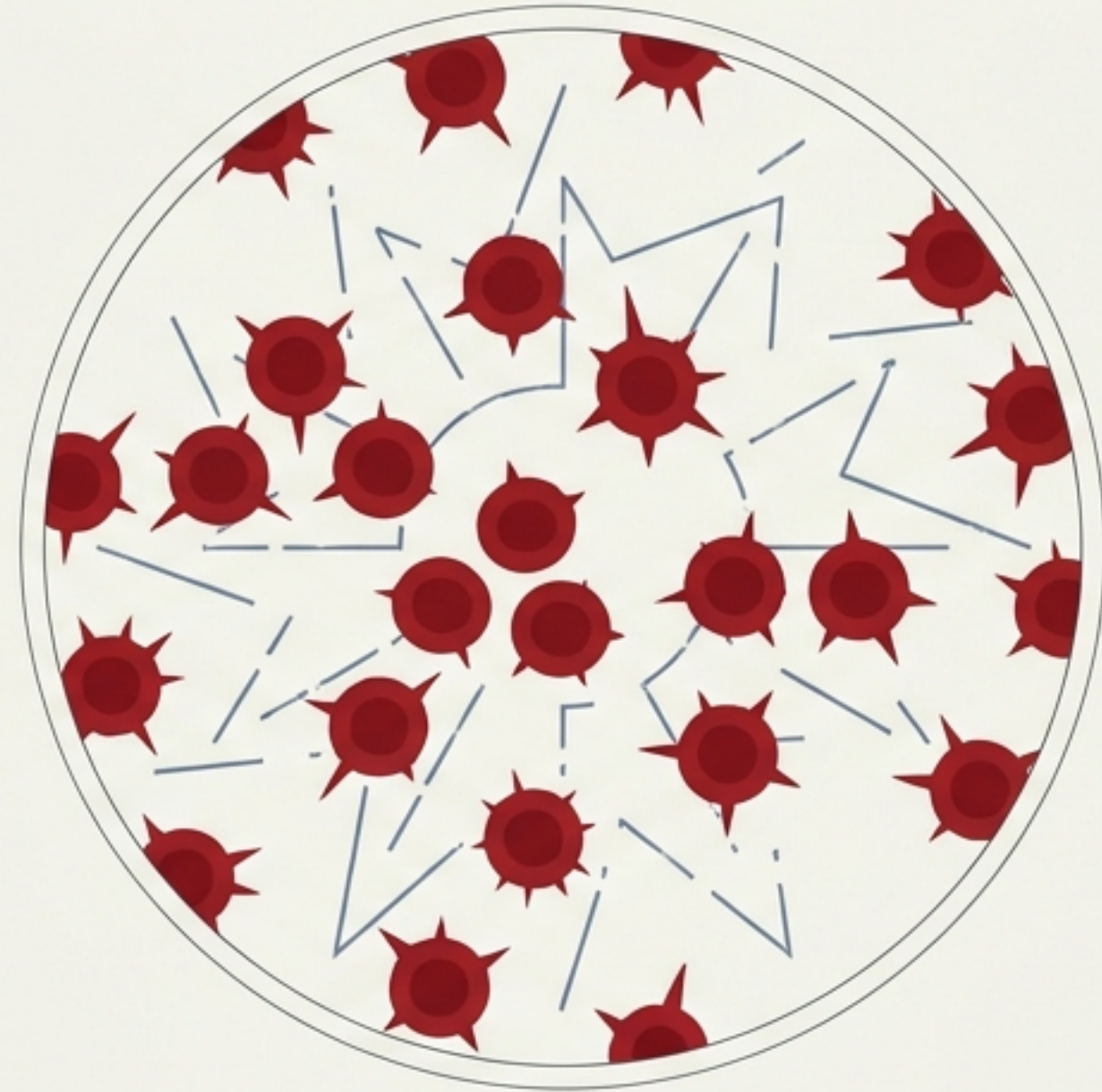
A teardrop suggests deformation under pressure. In Marrow Fibrosis, this is the cell's story: forced through a distorted environment, the shape narrates what the cell has endured.



The eye detects 'wrongness' before the mind names it.



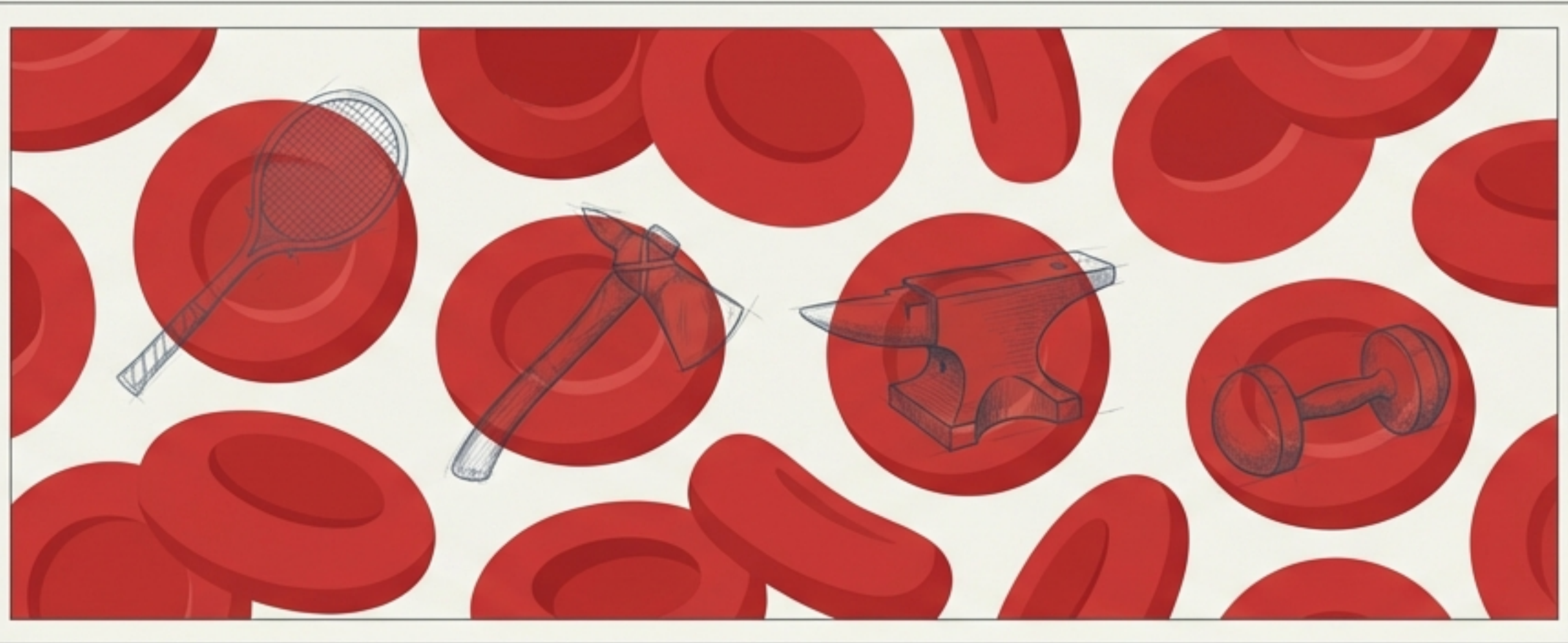
Burr Cells (Patterned)



Spur Cells (Unpatterned)

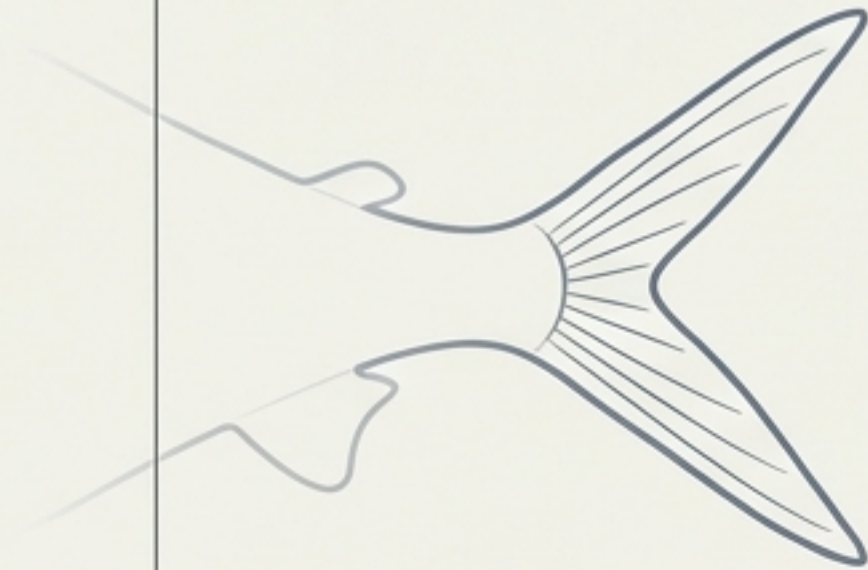
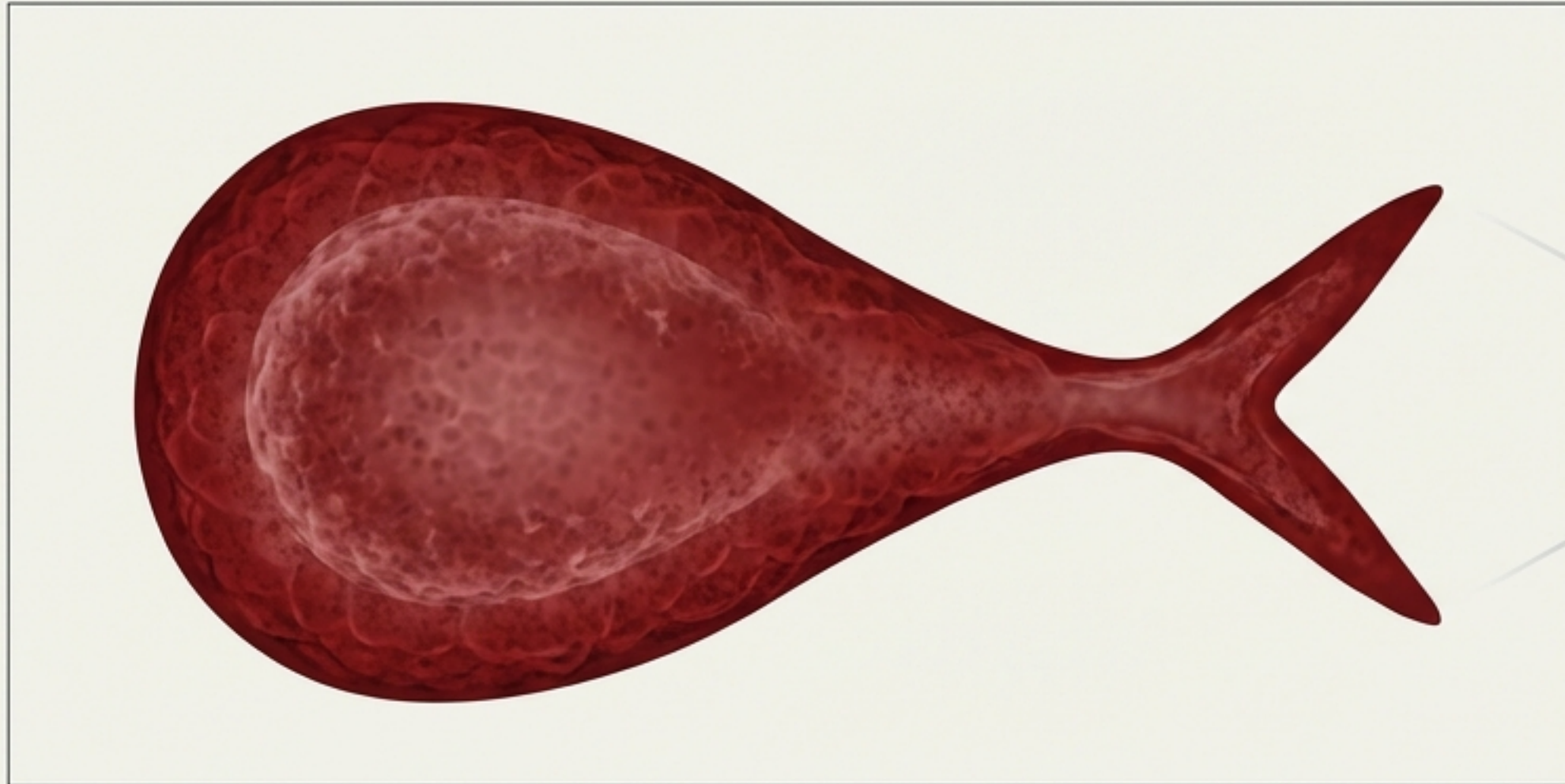
The aesthetic charge of hematology is about structural regularity. The eye classifies symmetry versus chaos before terminology is even applied.

Metaphors are fossils of the era in which they were coined.



In 1910, a physician might readily visualize an anvil or a belying pin. Today, these metaphors feel obscure. The cells have not changed, but our material world has. Morphologic language evolves with culture.

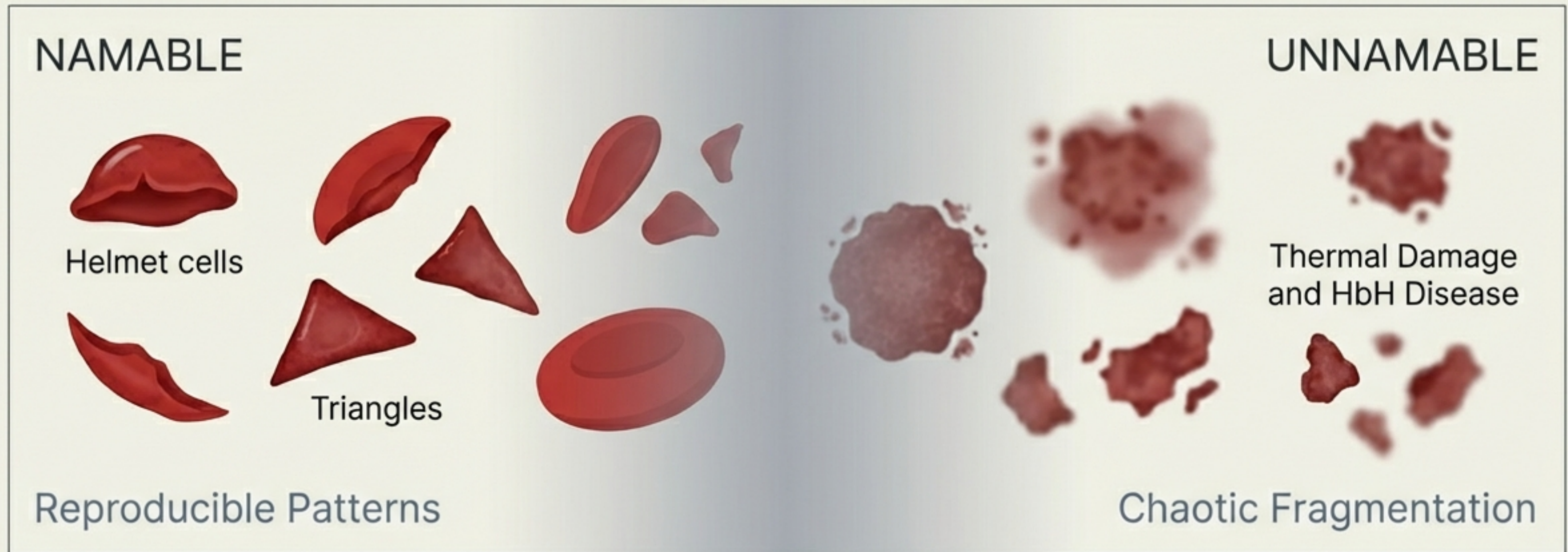
The birth of a new metaphor: The 'Fish Cell'.



Status: Alive / Active Metaphor.

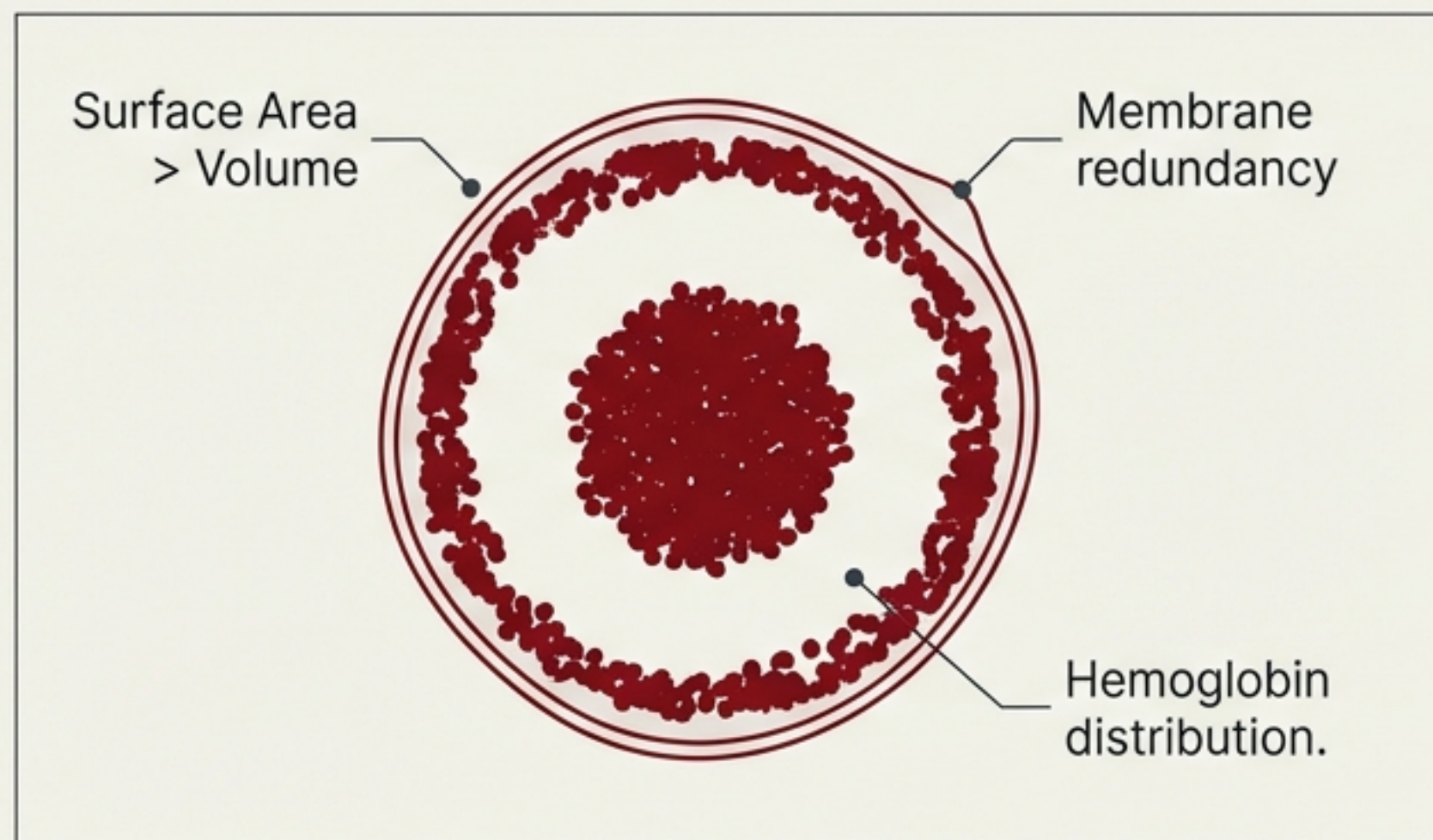
Occasionally, a new metaphor enters the field. Seen in iron deficiency, this form resembles a teardrop with a split projection. Because the term hasn't hardened into technical usage, you cannot hear 'fish cell' without picturing a fish.

Language follows pattern more readily than process.



When shear stress produces recurring fracture patterns, we have names. When injury is diffuse and non-repeating, language retreats to the generic term 'Fragments'.

Every metaphor is both a window and a filter.



~~The Metaphor.
“Looks like a target.”.~~

Metaphors highlight features but can obscure mechanisms. Focusing on the “bullseye” visual can delay the mechanistic understanding of excess membrane relative to volume. We must remain aware that our names are simplified choices.

From Microscope to Mind



We must remain aware of the borrowed worlds we use to see.

A microscopic view of a blood smear. The field is dominated by numerous red blood cells (erythrocytes), which appear as small, uniform, reddish-brown spheres. Scattered throughout are several white blood cells (leukocytes), which are larger and have distinct, dark purple nuclei. Some white blood cells show characteristic multi-lobed nuclei, while others have more rounded or band-shaped nuclei. The background is a light, off-white color, providing a clear contrast for the cells.

The microscope reveals a field of cells, and a field of language.

To be a master morphologist is to understand not just the biology, but the language used to describe it.

Sources & Credits

Based on the essay “The Language of Shape” by William Aird.

Presentation design narrative adapted for the cognitive lens.